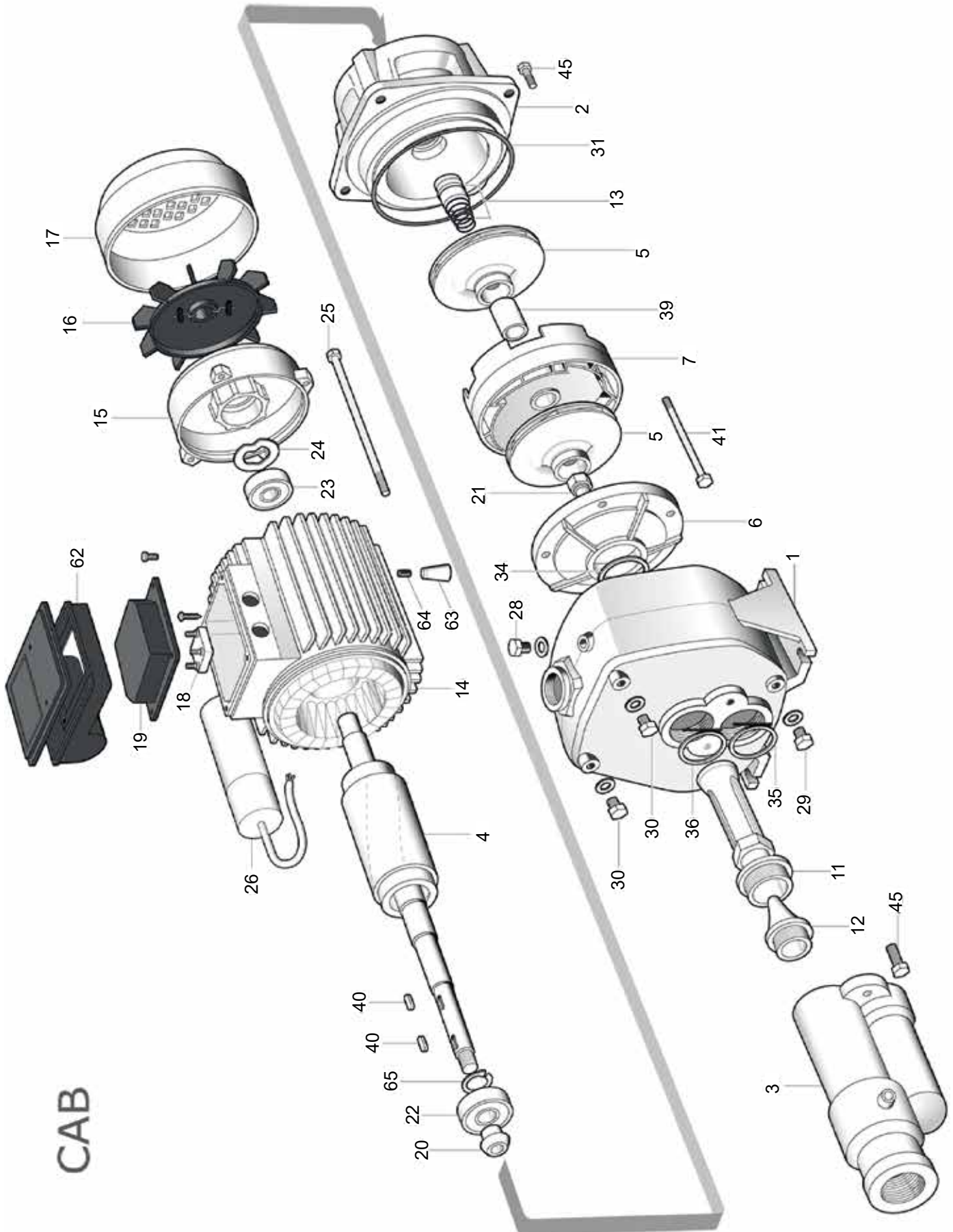


## Ersatzteile

11

Pumpe CAB 150 / 200 und 300



CAB

Ersatzteile

Pumpe CAB 150 / 200 und 300

| Nr.   | Bezeichnung                   | CAB 150                           |       | CAB 200                         |       | CAB 300                         |       |
|-------|-------------------------------|-----------------------------------|-------|---------------------------------|-------|---------------------------------|-------|
|       |                               | Art.-Nr.:                         | €/St. | Art.-Nr.:                       | €/St. | Art.-Nr.:                       | €/St. |
| 1     | Pumpenkopf/Gehäuse            | 95.0001.03<br>S70017019           |       | 95.0001.03<br>S70017019         |       | 95.0001.03<br>S70017019         |       |
| 2     | Flansch                       | 95.0002.03<br>S70046002           |       | 95.0002.03<br>S70046002         |       | 95.0002.03<br>S70046002         |       |
| 3     | Gußinjektor                   | 95.0003.03<br>S70016000           |       | 95.0003.03<br>S70016000         |       | 95.0003.03<br>S70016000         |       |
| 4     | Welle 230 Volt                | 95.0004.03<br>S75405007           |       | 95.0004.04<br>S75405007A        |       | 95.0004.07<br>S75405007C        |       |
| 4     | Welle 380 Volt                | 95.3004.03<br>S75405007B          |       | 95.0004.03<br>S75405007         |       | 95.0004.04<br>S75405007A        |       |
| 5     | Lauftrad (Messing)            | 95.0005.03<br>S71127029           |       | 95.0005.04<br>S71127030         |       | 95.0005.07<br>S71127023         |       |
| 6, 7  | Laufschutz kpl.               | 95.1006.03                        |       | 95.1006.03                      |       | 95.1006.03                      |       |
| 6     | Deckel für Laufschutz         | 95.0006.03<br>M72514013           |       | 95.0006.03<br>M72514013         |       | 95.0006.03<br>M72514013         |       |
| 7     | Laufschutz einzeln            | 95.0007.03<br>M72519004           |       | 95.0007.03<br>M72519004         |       | 95.0007.03<br>M72519004         |       |
| 11    | Diffusor                      | 95.0011.03<br>M72521013           |       | 95.0011.04<br>M72521005         |       | 95.0011.04<br>M72521005         |       |
| 12    | Düse                          | 95.0012.03<br>M72521014           |       | 95.0012.04<br>M72521007         |       | 95.0012.04<br>M72521007         |       |
| 13    | Gleitringdichtung             | 95.0013.03<br>M60400010/1         |       | 95.0013.03<br>M60400010/1       |       | 95.0013.03<br>M60400010/1       |       |
| 14    | Wicklung Wechselstrom         | 95.2014.03<br>S57900014           |       | 95.2014.04<br>S57900034         |       | 95.2014.07<br>S57900036         |       |
| 14    | Wicklung Drehstrom            | 95.3014.03<br>S57900013           |       | 95.3014.04<br>S57900015         |       | 95.3014.07<br>S57900016         |       |
| 15    | Motorkappe                    | 95.0015.03<br>S70214004           |       | 95.0015.03<br>S70214004         |       | 95.0015.03<br>S70214004         |       |
| 16    | Lüfterrad                     | 95.0016.03<br>M60100003           |       | 95.0016.03<br>M60100003         |       | 95.0016.03<br>M60100003         |       |
| 17    | Lüfterraddeckel               | 95.0017.03<br>M60200022           |       | 95.0017.03<br>M60200022         |       | 95.0017.03<br>M60200022         |       |
| 18    | Klemmleiste 230 Volt          | 95.0018.03<br>M61100008           |       | 95.0018.03<br>M61100008         |       | 95.0018.03<br>M61100008         |       |
| 18    | Klemmleiste 400 Volt          | 95.1018.12<br>M61100003           |       | 95.1018.12<br>M61100003         |       | 95.1018.12<br>M61100003         |       |
| 19    | Klemmkastendeckel (Drehstrom) | 95.0019.03<br>M62700008           |       | 95.0019.03<br>M62700008         |       | 95.0019.03<br>M62700008         |       |
| 20    | Spritzring                    | 95.0020.03<br>M72606000           |       | 95.0020.03<br>M72606000         |       | 95.0020.03<br>M72606000         |       |
| 21    | Selbstsichernde Mutter        | 95.0021.01<br>M60513004           |       | 95.0021.01<br>M60513004         |       | 95.0021.01<br>M60513004         |       |
| 22-23 | Kugellager                    | 95.0022.03<br>M60300002           |       | 95.0022.03<br>M60300002         |       | 95.0022.03<br>M60300002         |       |
| 24    | Alu-Springring                | 95.0024.03<br>M60603002           |       | 95.0024.03<br>M60603002         |       | 95.0024.03<br>M60603002         |       |
| 25    | Motorstange                   | 95.0025.03<br>M75450003           |       | 95.0025.03<br>M75450003         |       | 95.0025.03<br>M75450003         |       |
| 26    | Kondensator                   | 95.0026.03<br>(31,5 µF) M61400007 |       | 95.0026.04<br>(35 µF) M61400014 |       | 95.0026.07<br>(50 µF) M61400024 |       |
| 28-30 | Einfüll- u. Entl.stopfen      | 95.0028.01<br>M75147000           |       | 95.0028.01<br>M75147000         |       | 95.0028.01<br>M75147000         |       |
| 31    | O-Ring-Dichtung               | 95.0031.03<br>M60900010           |       | 95.0031.03<br>M60900010         |       | 95.0031.03<br>M60900010         |       |
| 34    | Dichtung Laufschutz           | 95.0034.03<br>M60900014           |       | 95.0034.03<br>M60900014         |       | 95.0034.03<br>M60900014         |       |
| 35    | Dichtung Gußinjektor          | 95.0035.03<br>M74628003           |       | 95.0035.03<br>M74628003         |       | 95.0035.03<br>M74628003         |       |
| 36    | Dichtung Gußinjektor          | 95.0036.03<br>M74628001           |       | 95.0036.03<br>M74628001         |       | 95.0036.03<br>M74628001         |       |
| 39    | Abstandhalter                 | 95.0039.03<br>M75118002           |       | 95.0039.03<br>M75118002         |       | 95.0039.03<br>M75118002         |       |
| 40    | Keil                          | 95.0040.03<br>M61000000           |       | 95.0040.03<br>M61000000         |       | 95.0040.03<br>M61000000         |       |
| 41    | Stange für Laufschutz         | 95.0041.03<br>M75450000           |       | 95.0041.03<br>M75450000         |       | 95.0041.03<br>M75450000         |       |
| 62    | Kondensator-Klemmkasten       | 95.0062.03<br>M62700019P-A        |       | 95.0062.03<br>M62700019P-A      |       | 95.0062.03<br>M62700019P-A      |       |
| 63    | Stützfüßchen                  | 95.0063.03<br>M75403022           |       | 95.0063.03<br>M75403022         |       | 95.0063.03<br>M75403022         |       |
| 64    | Schraube für Stützfüßchen     | 95.0064.03<br>M60505028           |       | 95.0064.03<br>M60505028         |       | 95.0064.03<br>M60505028         |       |
| 65    | Sperring                      | 95.0065.03<br>M60602001           |       | 95.0065.03<br>M60602001         |       | 95.0065.03<br>M60602001         |       |